

# PONTUS secondary scraper 9500

---



## **PONTUS SECONDARY-SCRAPER WITH CARBIDE** – Carbide segments moving independently of each other for maximum flexibility.

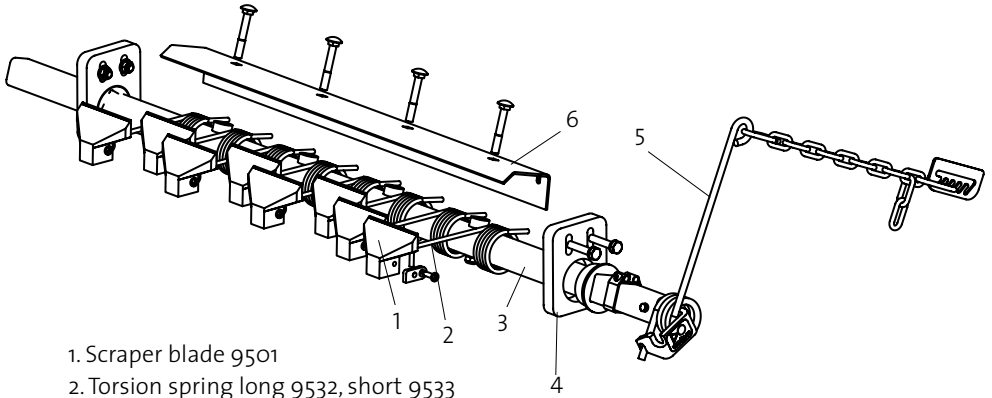
Pontus secondary scraper 9500 has individually spring-loaded scraper segment with carbide blade which can move  $\pm 10^\circ$  during operation and is therefore very flexible against the belt. This means that they have a highly effective cleaning effect.

The segments are changed easily using a Phillips screwdriver. The spring lever in combination with the chain means that the scraper pressure can be easily adjusted without tools.

The secondary scraper is placed under the drive pulley.



*Flexible! Each scraper segment can move  $\pm 10^\circ$  providing a more effective cleaning effect.*

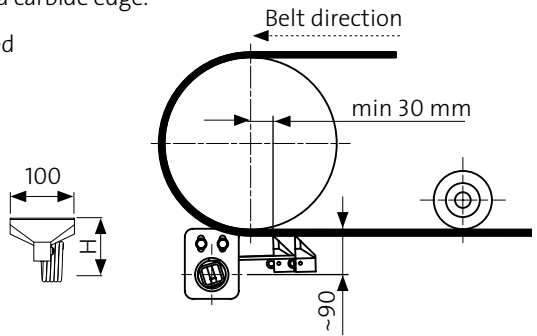


1. Scraper blade 9501
2. Torsion spring long 9532, short 9533
3. Beam
4. Holder H complete 8388
5. Lever arm complete 9178
6. Pontus bent profile 9535

All steel parts are electro-galvanized as standard. Stainless steel or powder-coated alternatives are available on request.

The scraper blade is made of PU with a carbide edge.

From B-W 1000 the scraper is supplied with dual lever arms.



ART.NO.	B-W	QTY. SEGMENTS	SCRAPER WIDTH	BEAM LENGTH
9504	400	4	370	1000
9505	500	5	460	1100
9506	650	6	550	1200
9508	800	8	730	1300
9510	1000	10	910	1500
9512	1200	12	1090	1700
9514	1400	14	1270	1900
9516	1600	16	1450	2100

Wider belt cleaners can be offered on request.